

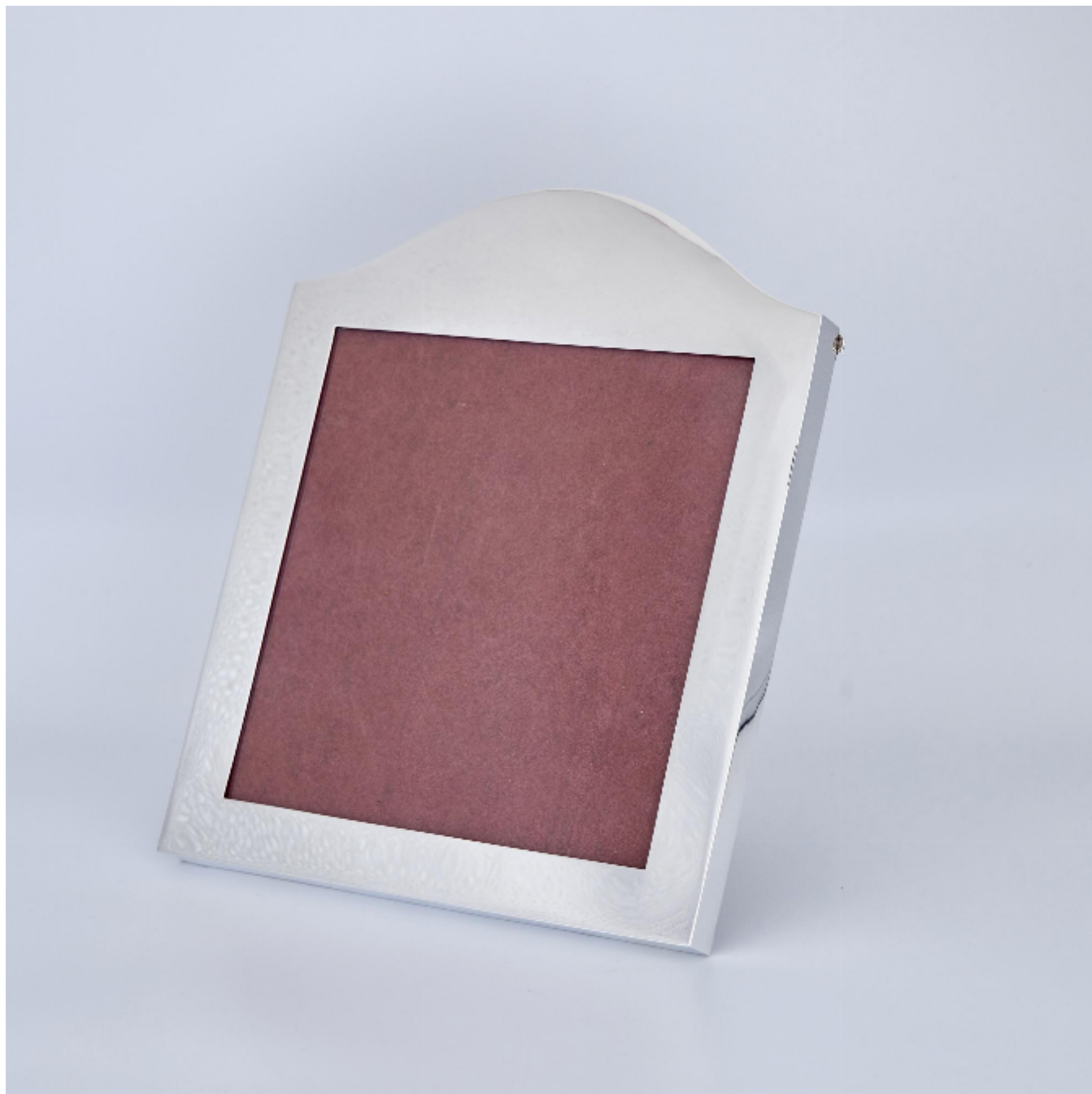
LANGFORDS

Antique & Contemporary Silver

Handmade domed-top silver photograph frame

Mappin & Webb

£1,750



REF: 9712

Height: 285 mm (11.22")

Width: 237 mm (9.33")

Weight: 682 g

Description

Handmade silver photograph frame in landscape format, with wide borders and domed top; sometimes referred to as a camel-back frame. It is of particularly nice quality and the aperture will hold a photo that is almost square at $7\frac{3}{4}" \times 7\frac{1}{2}"$ (196mm x 190mm).

The frame's simplicity lends itself to personalising with engraving.