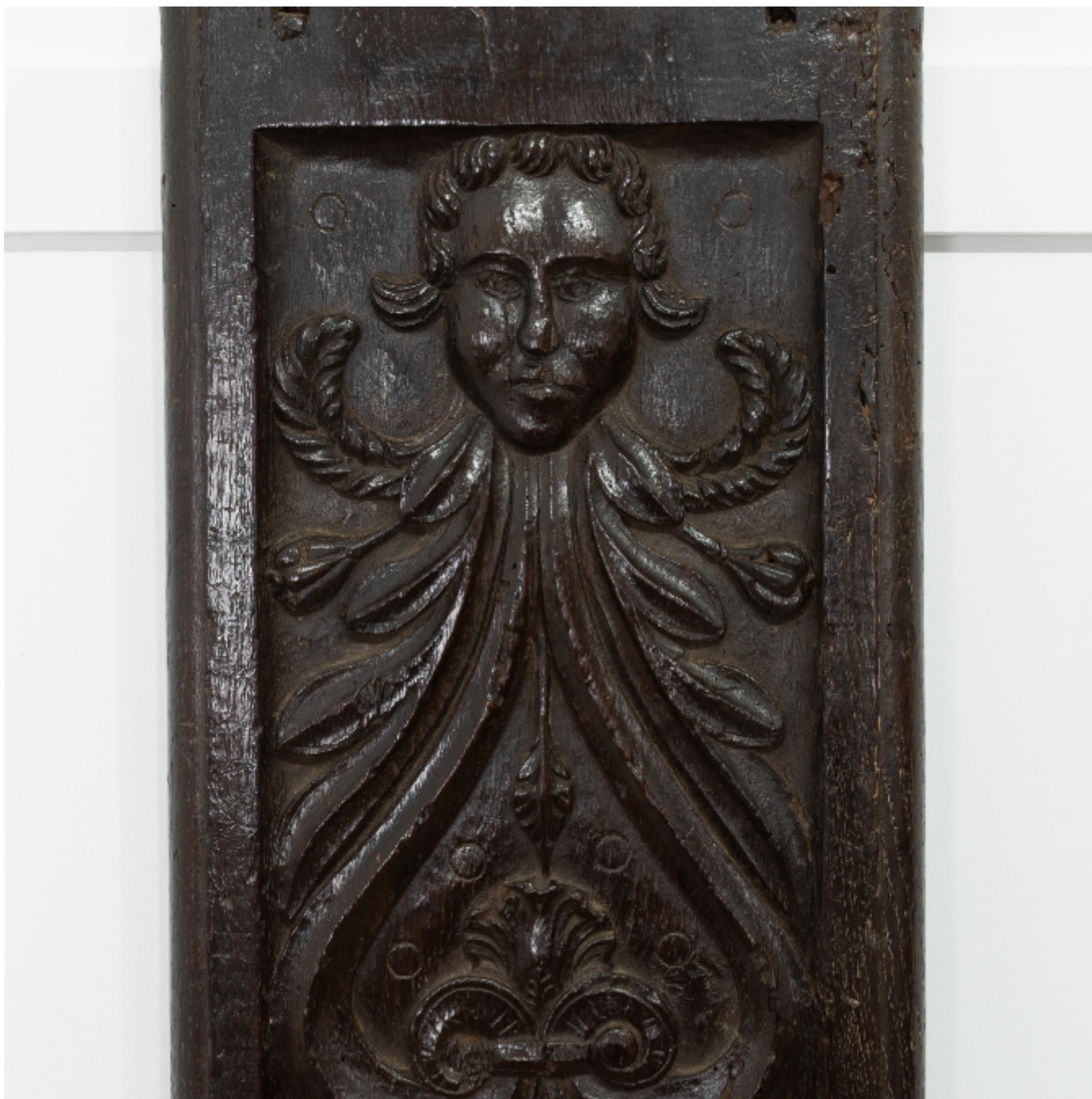




A large Elizabeth I carved oak architectural muntin rail, circa 1570

£695



Houlston UK Ltd

Correspondence: Cotswold Business Centre, 2 A P Ellis Road, Upper Rissington, GL54 2QB •

Showroom: Tudor House, Sheep Street, Stow-on-the-Wold, GL54 1AA

REF: 3539

Height: 84 cm (33.1")

Width: 21.8 cm (8.6")

Depth: 3 cm (1.2")

Description

Carved with a mask, with tightly scrolled hair, atop scrolling leaves and gourdes.