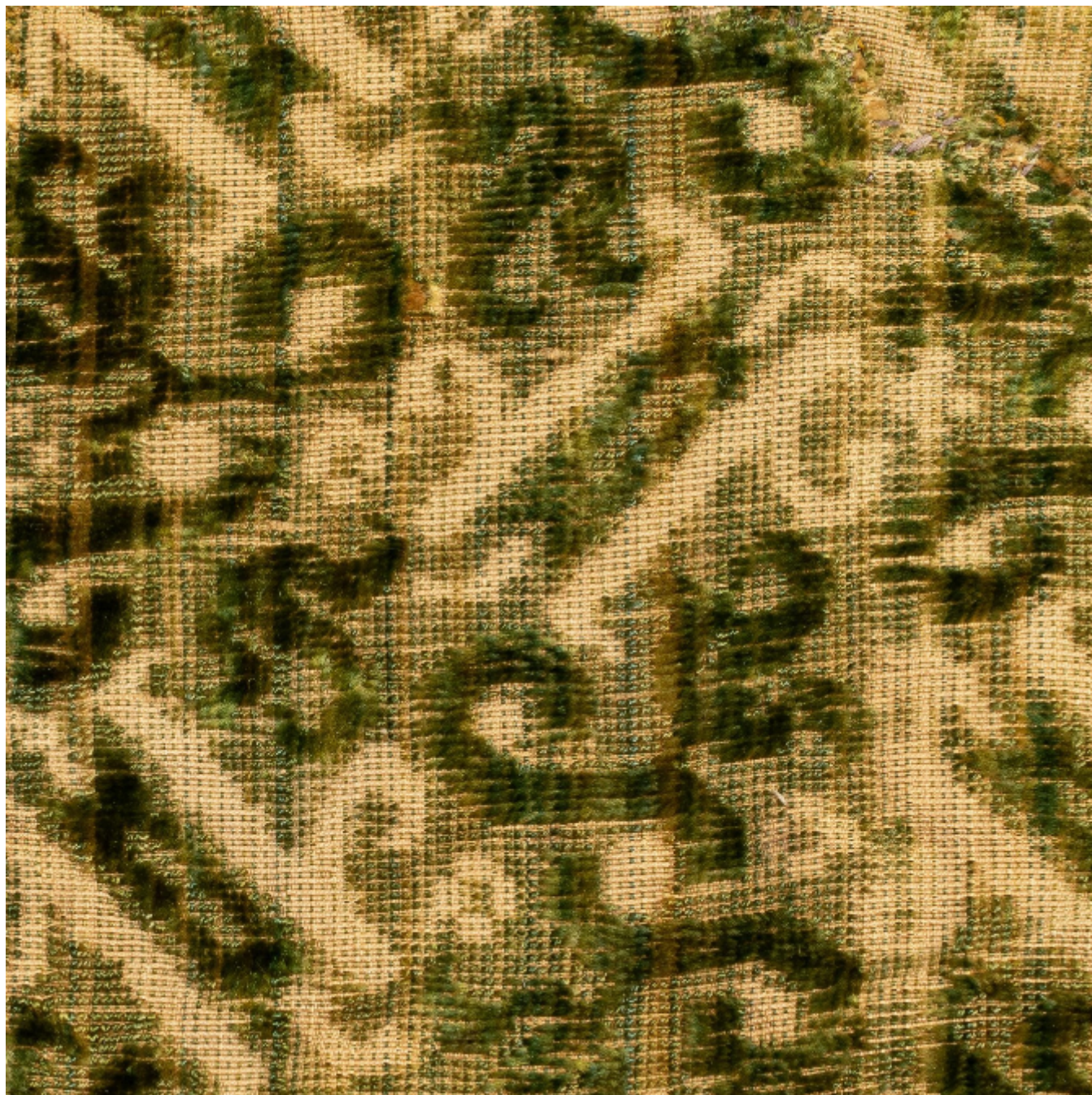




A rare large panel of figured ciselé silk velvet, Italian, Florence or Lucca, circa 1590-1610

£1,950



Houlston UK Ltd

Correspondence: Cotswold Business Centre, 2 A P Ellis Road, Upper Rissington, GL54 2QB •

Showroom: Tudor House, Sheep Street, Stow-on-the-Wold, GL54 1AA

REF: 4661

Height: 101 cm (39.8")

Width: 101.5 cm (40")

## Description

Historically painstakingly assembled, presumably from a fine garment or vestment, edged with a 17th century woven silk and gilt metal fringed braid, backed with a 19th century silk

For a lady's gown of similar velvet dated to 1610 see the collection of the National Museum of the Royal Palace, Pisa