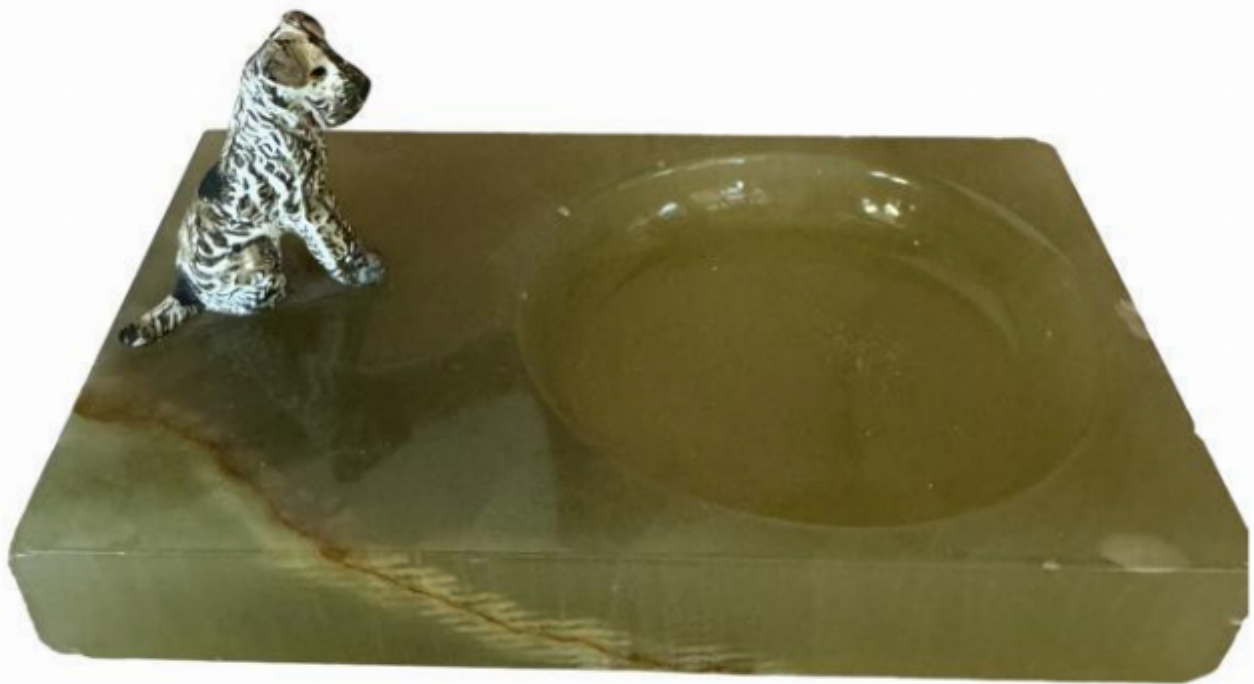


Art Deco pin dish

Sold



REF: 6239

Height: 7 cm (2.8")

Width: 11 cm (4.3")

Depth: 5 cm (2")

## Description

An Art Deco green onyx pin dish with a cold painted bronze of a terrier dog, circa 1920.

Pin dishes are small, shallow dishes designed to hold pins, needles, or small trinkets. Pin dishes are practical for sewing or crafting spaces, providing a stylish way to keep small items organised and easily accessible.

Cold-painted bronze refers to a decorative technique where bronze objects are coated with paint after casting, rather than being coloured during the metalworking process. Popularised in the late 19th and early 20th centuries, this method allows for detailed, colourful designs and realistic finishes on bronze sculptures and objects. Unlike traditional bronze, where patination is used to achieve colour, cold-painted bronze features vivid, enamel-like hues that are applied to the surface.

This technique was notably used by artists such as Franz Bergmann, producing intricate, visually striking pieces that combined the durability of bronze with vibrant, artistic expression.