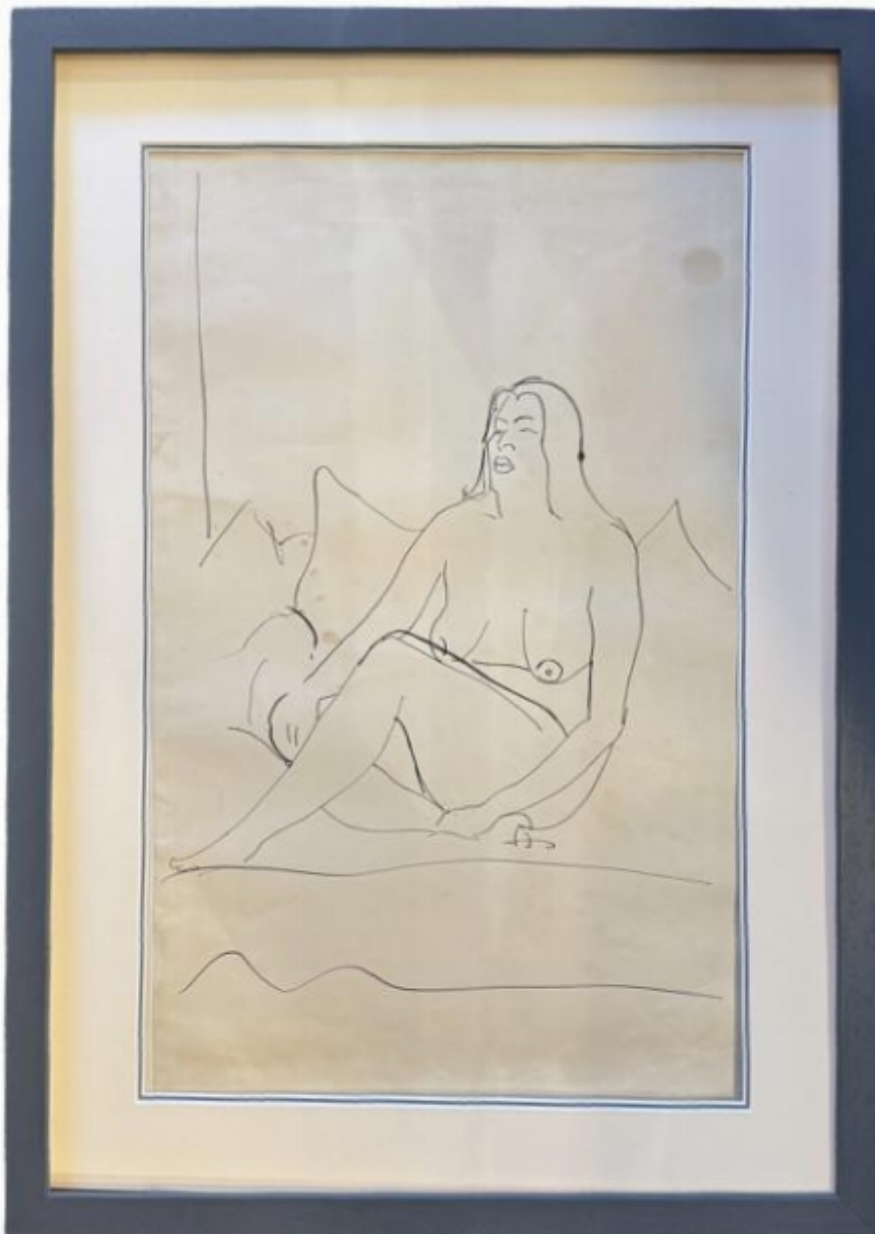


Study of a seated female nude - Edward Wolfe RA (1897-1982)

£375



REF: 6661

Height: 50 cm (19.7")

Width: 31 cm (12.2")

Framed Height: 53 cm (20.9")

Framed Width: 44 cm (17.3")

Description

Study of a seated female nude - Edward Wolfe RA (1897-1982)

From the personal collection of Edward Wolfe's partner James (Jim) O'Connor.

Edward Wolfe was born in Johannesburg, South African Republic. He moved to England during the First World War and studied at the Regent Street Polytechnic and, from 1916-1918, Slade School of Art. While at The Slade, Wolfe was invited by Nina Hamnett and Roger Fry to join the latter's Omega Workshops, a design enterprise founded by members of the Bloomsbury Group and established in July 1913 with the intention of providing graphic expression to the essence of the Bloomsbury ethos. Wolfe first exhibited with the Omega Workshops in 1918.

After his first solo exhibition in Johannesburg in 1920, Wolfe showed extensively in Britain and internationally. He exhibited at the Royal Academy from 1951 to 1970. He was elected an Associate Member of the Academy in 1967 and a Member in 1972.

His work is held by the Tate Gallery, the Royal Academy, the National Portrait Gallery, London and many other public and private collections.