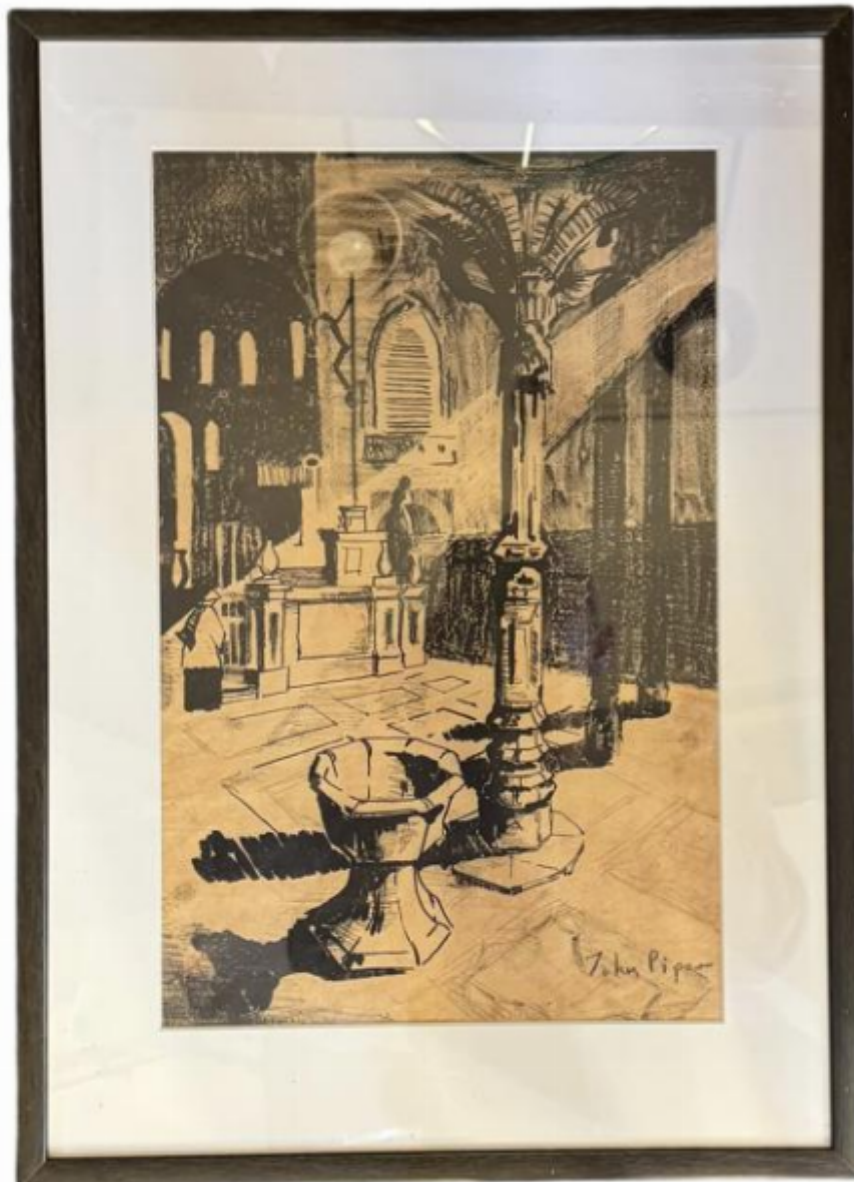


Emmett & White  
ANTIQUES & INTERIORS

John Piper 1903-1992 framed lithograph

£475



REF: 6750

Height: 39 cm (15.4")

Width: 25 cm (9.8")

Framed Height: 52 cm (20.5")

Framed Width: 37 cm (14.6")

## Description

John Piper (1903-1992) framed lithograph of a church interior. Signed within the plate. Circa 1930.

John Piper (1903-1992) was a British artist known for his paintings, prints, and stained glass designs. His work often depicted landscapes, architecture, and war scenes, blending abstraction with realism. Piper was influential in the mid-20th century, particularly for his depictions of bombed buildings during World War II as an official war artist.

He collaborated on stage designs and created striking stained glass for Coventry Cathedral. His art, rich in texture and color, reflected an interest in British heritage and romanticism. Piper's work continues to be celebrated for capturing the mood and essence of Britain's landscapes and historic architecture.